

REPORTING

ANTI-SOCIAL BEHAVIOUR



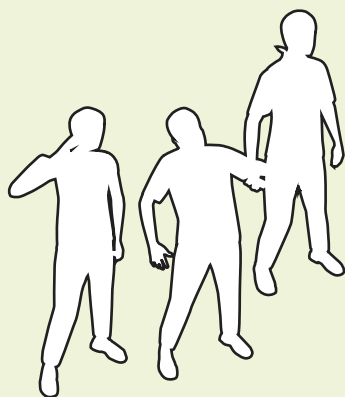
Anti-social behaviour is unacceptable and can have a negative effect on everyone's quality of life. We have put together a helpful list of contacts on how to report the main types of anti-social behaviour.

Dealing and buying drugs on the street

**Met Police:**

For non-emergency please call 101 or report online, in an emergency or if a crime is happening right now call 999.

Intimidating groups taking over public spaces

**Met Police:**

For non-emergency please call 101 or report online, in an emergency or if a crime is happening right now call 999.

Parks Police (Parks and Open Spaces):

Patrolling mobile: 07500 959 442/parkspolice@wandsworth.gov.uk

On Council estates - Wandsworth Housing Area Teams:

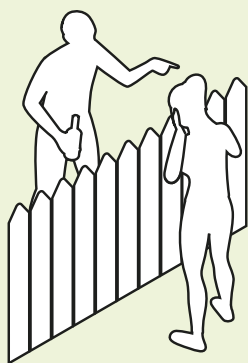
Eastern - 020 8871 7439

Southern - 020 8871 7288

Central - 020 8871 5333

Western - 020 8871 5530

Nuisance neighbours

**Met Police:**

For non-emergency please call 101 or report online, in an emergency or if a crime is happening right now call 999.

On Council estates - Wandsworth Housing Area Teams:

Eastern - 020 8871 7439

Southern - 020 8871 7288

Central - 020 8871 5333

Western - 020 8871 5530

OR contact your Registered Social Landlord.

Begging and antisocial drinking



Met Police on 101 or 999 in an emergency.

Parks Police (Parks and Open Spaces):

Patrolling mobile: 07500 95 94 42 /
parkspolice@wandsworth.gov.uk

Graffiti

**Graffiti Team:**

graffiti@wandsworth.gov.uk / 020 7350 1122 / online

If you consider this a hate crime, Police on 101 or 999 in an emergency

Flytipping, dumped rubbish and abandoned cars



Wandsworth Council Reg Services: Flytipping / dumped rubbish
www.wandsworth.gov.uk/street-care-and-cleaning

Abandoned Cars:

www.wandsworth.gov.uk/roads-and-transport/streets/abandoned-vehicles/

On Council estates - Wandsworth Housing Area Teams:

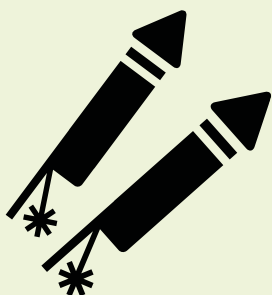
Eastern - 020 8871 7439

Southern - 020 8871 7288

Central - 020 8871 5333

Western - 020 8871 5530

Misusing fireworks



Met Police:

For non-emergency please call 101 or report online, in an emergency or if a crime is happening right now call 999.

On Council estates - Wandsworth Housing Area Teams:

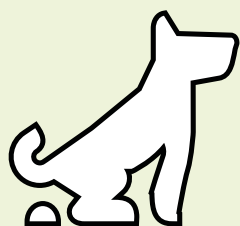
Eastern - 020 8871 7439

Southern - 020 8871 7288

Central - 020 8871 5333

Western - 020 8871 5530

Dog Control



Animal Welfare Service

020 8871 7606 / 07860 544733

animalwelfare@richmondandwandsworth.gov.uk

online reporting form: www.wandsworth.gov.uk/dogs

Parks Police (Parks and Open Spaces):

Patrolling mobile: 07500 95 94 42 / parkspolice@wandsworth.gov.uk

Noise nuisance



Regulatory Services on 020 8871 6127

or online at: www.wandsworth.gov.uk/environment/nuisance-behaviour/report-nuisance-behaviour

If you live in a council housing property or estate, to report noise nuisance that is happening now contact WEC on 020 8871 7490. For persistent noise nuisance call your **Housing Area Team**.

Other useful contact numbers:

Victim Support

You do not have to report a crime to the police to receive help. Contact Victim Support at any time regardless of how long ago the crime happened. Call free on **08 08 16 89 111**.

Crimestoppers

Call **0800 555 111** or report online at crimestoppers-uk.org

Wandsworth Mediation Service

020 7223 7744 or online at wandsworthmediation.co.uk

Neighbourhood Alert

Join Neighbourhood Watch today to receive free crime and anti-social behaviour messages direct from your local council.

Join now at

ourwatch.org.uk/joinNW

